

Manhattan

**Fall
2016**

Reconstruction of Pershing Square West

E 42nd St, Vanderbilt to Lexington Aves; Park Ave West, E 42nd to E 40th Sts

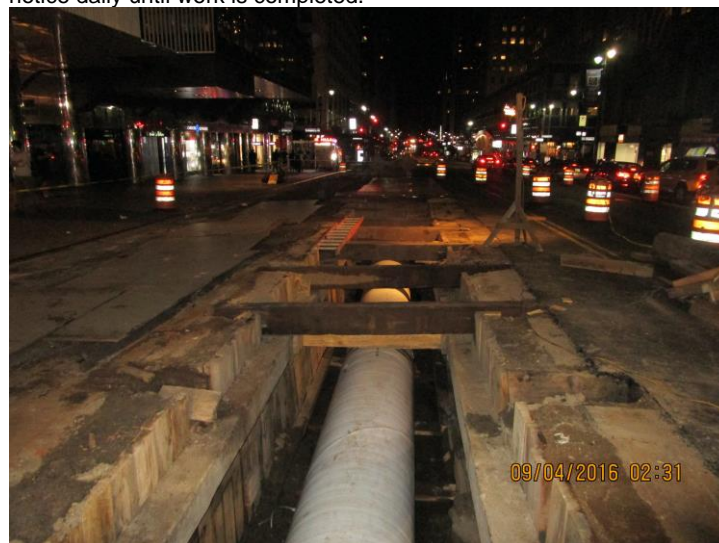
Project # HWPLZ004M

The New York City Department of Design and Construction (NYC DDC) is managing a capital reconstruction project to replace existing infrastructure such as trunk and distribution water mains and some sewer at Park Ave W from E 40th to E 42nd Sts, E 40th St from Park to Madison Aves, and E 42nd St from Vanderbilt to Lexington Aves, and construct a pedestrian plaza at Park Ave W from E 41st to E 42nd Sts. This project began in the Spring of 2014 and has an anticipated completion date of Spring 2017.

service must be shut off by closing the valves at either end of the section. Advance notice will be given for all planned interruptions. Water service will be restored everyday by 6pm or by the end of the work shift. If additional shut downs are required you will receive a new notice daily until work is completed.

Work Completed To Date

- Exploratory test pits on Park Ave W between E 42nd and E 39th Sts, on E 40th St between Park and Madison Aves, and on E 42nd St between Vanderbilt and Lexington Aves.
- Installation of 20" water main (south side), 12" water main (north side), gas main installation (north side), and catch basin/chute connection on E 42nd St between Vanderbilt and Lexington Aves.
- Utility layout/relocation of Con Ed and ECS facilities on E 42nd St between Vanderbilt and Lexington Aves, on E 40th and E 41st Sts between Park and Madison Aves, and on Park Ave W between E 42nd and E 39th Sts (still in progress).
- 16" sewer replacement on Park Ave W between E 42nd and E 41st Sts; and 12" water main replacement on E 40th St between Park and Madison Aves and on Park Ave W between E 41st and E 40th Sts.
- Gas main installation on Park Ave W between E 41st and E 40th Sts and on E 41st St between Park and Madison Aves.



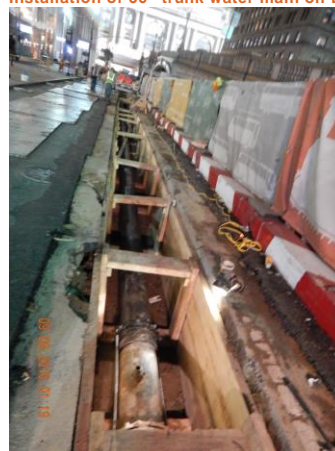
Installation of 36" trunk water main on E 42nd St between Park and Lexington Aves

Anticipated Work Schedule

Fall 2016

Night and weekend work operations include:

- Utility relocation and installation of 36" trunk water main on E 42nd St between Park and Lexington Aves.
- Construction of retaining wall for rain garden on Park Ave W between E 42nd and E 41st Sts; gas main installation on Park Ave W between E 40th St and E 39th St; 36" trunk water main installation on Park Ave W between E 41st and E 40th Sts and on E 40th St between Park and Madison Aves; 12" water main installation at the intersection of Park Ave W and E 40th St; and construction of plaza (granite treads and pavers, trench drains, tree removal, etc.) on Park Ave W between E 42nd and E 41st Sts.
- Utility relocation on E 40th St between Park and Madison Aves.
- Catch basin installation and sewer connection on E 41st St between Park and Madison Aves.



Installation of 12" water main on Park Ave West between E 41st and E 40th Sts



Community Impacts

During construction hours, you can expect the following:

- Increased levels of dust, noise and heavy equipment.
- Vehicular travel lane closures will be required, as well as detours. Warning signs will be posted in advance.
- Parking and driveway/loading dock restrictions, signs will be posted within the affected areas.
- Emergency vehicle access and pedestrian access to sidewalk and buildings will be maintained at all times.

Community Construction Liaison (CCL)

The DDC has assigned **Myriam Benjamin** of JED Engineering as the **Community Construction Liaison (CCL)** for this project. Please contact Myriam for any project-related inquiries, concerns or to be added to the electronic Neighborhood Notification Network (N3N) list.

Phone: 646-895-9271 / **Fax:** 646-922-7682

Field Office: 274 Madison Avenue, Suite 1704, NY, NY 10016

Email: PershingSqPlzCCL@gmail.com

Water Service Interruption

During the course of this project, there will be temporary water service interruptions. To allow water mains replacement, the existing water

Newsletter Distribution

The Bi-monthly Reconstruction Newsletter is distributed throughout the project area by the CCL and is also available at Manhattan Community Boards #5 and #6.

Bill de Blasio

Mayor

Dr. Feniosky Peña-Mora
Commissioner

DDC Website
www.nyc.gov/DDC

DDC Video
www.nyc.gov/webuild