

Manhattan

Second Quarter Newsletter 2019

Infrastructure Upgrades along 2nd Avenue

Murray Hill/Kips Bay Area

Project #MED607

The New York City Department of Design and Construction commenced the Infrastructure Upgrades along 2nd Avenue and Surrounding Areas Project in the summer of 2018, with an anticipated completion date of fall 2021.

Approximately 30-40% of the 12" distribution water mains are installed and completed. Approximately 40% of the Gas Mains are installed and completed. Approximately 50% of Catch Basins and Chute Connections are installed and completed at various locations.

Work Completed:

Gas Main installation is completed on E. 35th Street between 1st and 2nd Avenues; 3rd Avenue, between E. 32nd and E. 36th Streets; 1st Avenue at E. 35th Street; and 2nd Avenue between E. 35th and E. 36th Streets.

Catch Basin and Chute Connection have been installed and completed on 3rd Avenue at E. 35th and E. 33rd Streets; and on 2nd Avenue at E. 35th and E. 33rd Streets.

Upcoming Work:

Excavation and installation of 20" Water Main along 2nd Avenue, between E. 35th and E. 36th Streets; 2nd Avenue at E. 36th Street, and on 3rd Avenue at E. 35th Street.

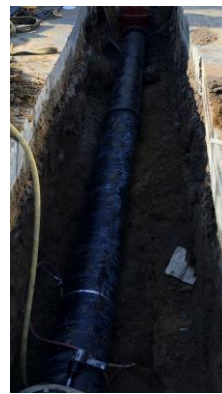
The city contractor will continue to install catch basin and chute connections at various locations on 1st Avenue at E. 35th Street and on 3rd Avenue at E. 35th Street.

Special Needs

The DDC staff will work specifically with individuals that have special needs who may be uniquely impacted by the project. Please reach out to the project contact.

Trash Collection

Pack your trash properly to avoid breakage and/or spill over. Place it in the designated area, created by the city contractor, as close to collection time as possible. If you use a private carter, ensure your trash collection occurs in a timely fashion. If unsure where to bring your trash, please call the projects CCL.



2nd Avenue at E. 36th Street

New 12" Distribution Water Main Installed & Temp. Backfilled



E. 33rd Street at 3rd Avenue

Catch Basin Installation & Completed Catch Basin Installation

Community Impacts

During construction hours, you can expect increased levels of dust, noise and heavy equipment. In addition, vehicular travel lane closures and detours may occur. Driveway and curbside parking may be restricted. Please note, signs will be posted and emergency vehicle/pedestrian/building access will be maintained at-all-times.

Community Construction Liaison (CCL)

The DDC has assigned **Karen Flores**, as the Community Construction Liaison (CCL) for this project. Contact **Karen** for your project related inquiries/concerns.

Phone: 646-768-9105

Email: 2ndavecccl@gmail.com

Field Office: 300 E. 40th Street, New York, NY 10016

Newsletter Distribution

Construction Newsletters for this project is distributed within the work area & Manhattan's Community Board #6.