

Reconstruction of Pershing Square West

E 42nd St., Vanderbilt to Lexington Aves.; Park Ave. West, E 42nd to E 40th Sts.

Project # HWPLZ004M

The New York City Department of Design and Construction (NYC DDC) is managing a capital reconstruction project to replace existing infrastructure such as trunk and distribution water mains and some sewer at Park Avenue West from East 40th Street to East 42nd Street, East 40th Street from Park Avenue to Madison Avenue, and East 42nd Street from Vanderbilt Avenue to Lexington Avenue, and construct a pedestrian plaza at Park Avenue West from East 41st Street to East 42nd Street. This project began in the Spring of 2014 and has an anticipated completion date of Summer 2016.

Work Completed To Date

- Exploratory test pits on Park Avenue West from E 42nd to E 39th Streets, on E 40th Street from Park to Madison Avenues, and on E 42nd Street from Vanderbilt to Lexington Avenues.
- Installation of distribution water main (20") on E 42nd Street from Vanderbilt to Lexington Avenues (south side).
- Utility layout/relocation of Con Ed and ECS facilities on E 42nd Street from Park to Vanderbilt Avenues, on E 40th Street from Park to Madison Avenues and on Park Ave West (in progress).
- Partial installation of distribution water main (12") on E 42nd Street from Park to Lexington Avenues (north side).

Anticipated Work Schedule

November - December 2015

Night and weekend work operations include:

- Installation of 12" water main and 8" gas main, and utility relocation on E 42nd Street from Vanderbilt to Lexington Avenues (north side).
- Installation of 12" water main, 16" sewer and 12" gas main on Park Avenue West from E 42nd Street to E 40th Street.
- Utility relocation on E 40th Street from Park to Madison Avenues.
- Installation of 12" water main and utility relocation on E 41st Street from Park to Madison Avenues.

Community Impacts

During construction hours, you can expect the following:

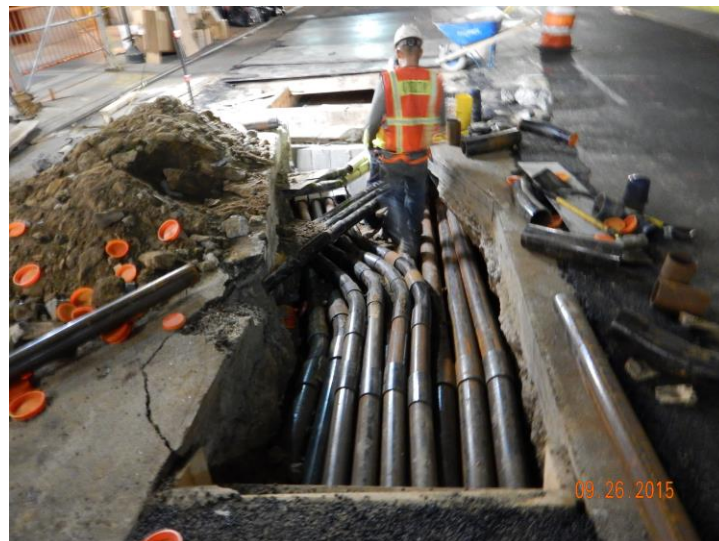
- Increased levels of dust, noise and heavy equipment.
- Vehicular travel lane closures will be required, as well as detours. Warning signs will be posted in advance.
- Parking and driveway/loading dock restrictions, signs will be posted within the affected areas.
- Emergency vehicle access and pedestrian access to sidewalk and buildings will be maintained at all times.

Special Needs

Individuals with special needs who may be uniquely impacted by this project should contact the project's Community Construction Liaison, as soon as possible, to make them aware of your situation. DDC will work with you to attempt to minimize the inconvenience as much as possible.

Water Service Interruption

During the course of this project, there will be temporary water service interruptions. To allow water mains replacement, the existing water service must be shut off by closing the valves at either end of the section. Advance notice will be given for all planned interruptions. Water service will be restored everyday by 6pm or by the end of the work shift. If additional shut downs are required you will receive a new notice daily until work is completed.



Installation of utility ducts on E 40th St. between Park & Madison Aves.

Trash Collection

Proper trash collection can be a challenge on a project as large as this but if everyone is considerate it can be managed with a modicum of disruption. Please pack your trash properly to avoid easy breakage and/or spill over. Put it in the designated areas as close to collection time as possible. If you use a private carter, ensure your trash collection occurs in a timely fashion. If you aren't sure where to bring your trash, please call the CCL.

Community Construction Liaison (CCL)

The DDC has assigned **Myriam Benjamin** of JED Engineering as the **Community Construction Liaison (CCL)** for this project. Please contact Myriam for any project-related inquiries, concerns or to be added to the electronic Neighborhood Notification Network (NNN) list.

Phone: 646-895-9271 / **Fax:** 646-922-7682

Field Office: 274 Madison Avenue, Suite 1704, NY, NY 10016

Email: PershingSqPlzCCL@gmail.com

Newsletter Distribution

The bimonthly Reconstruction Newsletter is distributed throughout the project area by the CCL and is also available at Manhattan Community Boards #5 and #6.