



Henry Gutman, Commissioner

Park Avenue Tunnel

HBM551

Community Boards 5 & 6

Manhattan

October 2021

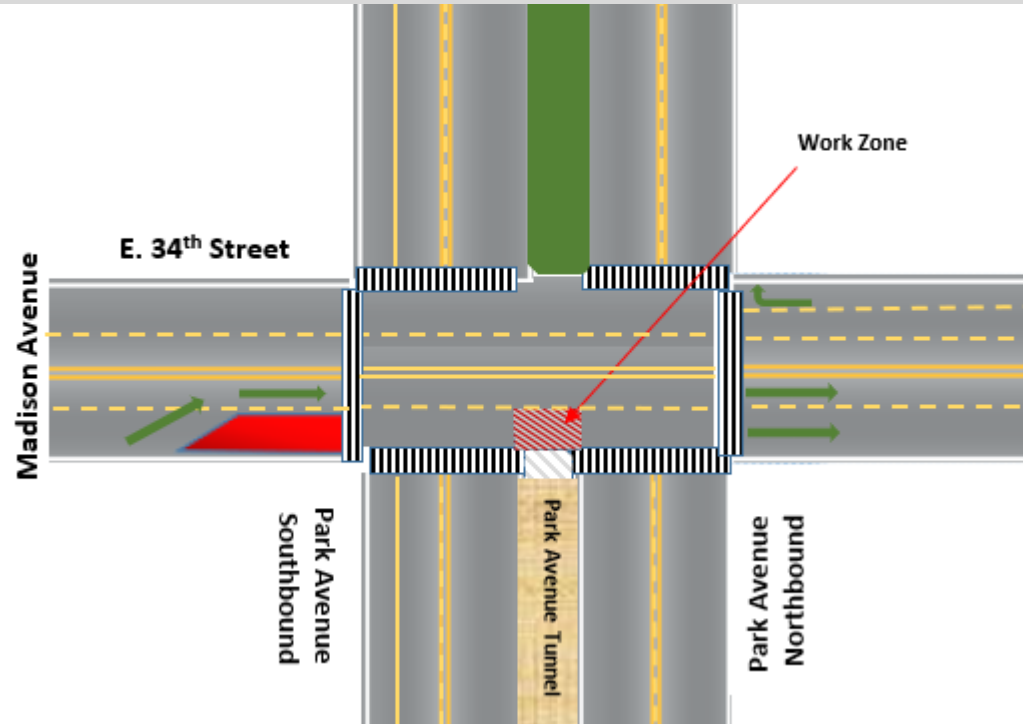


your city. your needs.
your number.

Important Notice

The NYCDOT Division of Bridges will continue the pavement repairs and steel plate replacement at the intersection of Park Avenue and 34th Street. The eastbound right lane closure on 34th Street has been extended and will continue to be in effect until Monday, November 15th. Eastbound traffic will continue the shift to one lane across the intersection.

Steel Plate Replacement & Pavement Repairs Park Avenue and East 34th Street Eastbound Right Closure Extended until Monday, November 15th



- Eastbound **RIGHT** lane closure on 34th Street
- Traffic will shift to one lane through the intersection

Patty Sarantakos from the LiRo Group is available to provide information about this project at (646) 476-0804 or parkavenuetunnel2016@gmail.com. For all NYC non-emergency services, including inquiries regarding NYCDOT construction projects, dial 311.