

# Infrastructure Upgrades along 2<sup>nd</sup> Avenue

## Murray Hill/Kips Bay Area

## Project #MED607

The New York City Department of Design and Construction (NYCDDC) continues to manage the 37 million dollar capital construction infrastructure upgrade project #MED607. Work includes, but is not limited to, the installation of catch basins at various locations, utility upgrades limited sewer upgrades, new hydrant installation and the installation of new trunk/distribution water mains in various locations between 1<sup>st</sup> Avenue and 3<sup>rd</sup> Avenue and between E. 32<sup>nd</sup> St. and E. 36<sup>th</sup> St.

### Work Completed:

Approximately 70% of distribution water main pipe has been installed to date. Approximately 9% of trunk water main pipe has been installed to date. Utility upgrades are ongoing.

The contractor was also able to complete another phase of work successfully while the streets and avenues leading to and from the Queens Midtown Tunnel pose difficult working conditions. 225 linear feet of new 48" steel trunk water main has been installed on 2nd Avenue between E. 35<sup>th</sup> St. and E. 37<sup>th</sup> Street. The contractor also continued the excavation of test pits for utility work on 1<sup>st</sup> Avenue at E. 35<sup>th</sup> St., on 2nd Avenue between E. 34<sup>th</sup> St. and E. 37<sup>th</sup> St. and on E. 35<sup>th</sup> St. between 2<sup>nd</sup> and 3<sup>rd</sup> Avenues.

### Upcoming Work:

The contractor will complete laying new 48" steel trunk water main on 2<sup>nd</sup> Avenue between E. 34<sup>th</sup> St and E. 37<sup>th</sup> St. The contractor will begin excavation and construction of Special Sewer Manhole No. 2 on 3<sup>rd</sup> Ave and E. 33<sup>rd</sup> St. The contractor will also continue to perform utility work in 2<sup>nd</sup> Ave. between E. 34<sup>th</sup> St. and E. 37<sup>th</sup> St. Finally the contractor continues excavating new test pits for utilities on 1<sup>st</sup> Avenue and E. 35<sup>th</sup> St.

### Special Needs

The DDC staff will work specifically with individuals that have special needs who may be uniquely impacted by the project. Please reach out to the project contact.

### Trash Collection

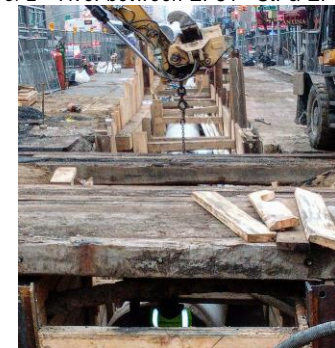
Pack your trash properly to avoid breakage and/or spill over. Place it in the designated area, created by the city contractor, as close to collection time as possible. If you use a private carter, ensure your trash collection occurs in a timely fashion. If unsure where to bring your trash, please call the projects CCL.

### Newsletter Distribution

Distribution of Construction Newsletters for this project are within the footprint of the project & Manhattan's Community Board #6.



Trunk Water Main Trench  
W/S of 2<sup>nd</sup> Ave. between E. 34<sup>th</sup> St. & E. 35<sup>th</sup> St.



Trunk Water Main pipe  
W/S of 2<sup>nd</sup> Ave. between E. 34<sup>th</sup> St. & E. 35<sup>th</sup> St.

### Community Impacts

During construction hours, you can expect increased levels of dust, noise and heavy equipment. In addition, vehicular travel lane closures and detours may occur. Curbside parking may be restricted and bus stop locations temporarily closed. Please note, signs are posted where necessary and emergency vehicle/pedestrian/building access will be maintained at-all-times.

### Community Construction Liaison (CCL)

The DDC has assigned **Karen Flores**, as the Community Construction Liaison (CCL) for this project. Contact **Karen** for your project related inquiries/concerns.  
Phone: 646-768-9105  
Email: 2ndaveccl@gmail.com  
Field Office: 300 E. 40<sup>th</sup> Street, New York, NY 10016

In an effort to practice social distancing, the Field Office is not handling any in-person appointments or meetings at this time. Please call or email only.